

Thinking, acting, organizing differently.

Experiment Ruwaard

Sandra de Loos
ICIC 2018
25 May 2018,

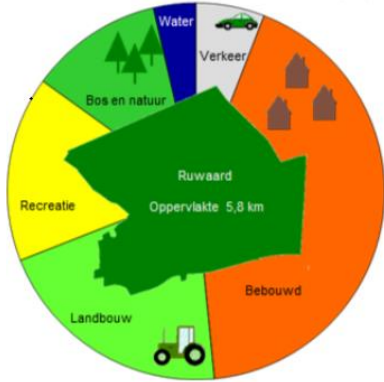
Why?



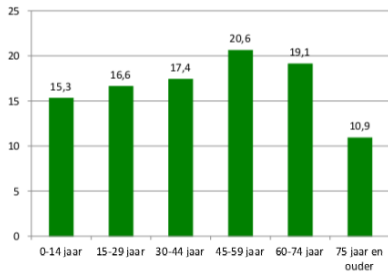
Community Ruwaard in detail

Thinking, acting, organizing differently.

Experiment Ruwaard



Leeftijdsofbouw in procenten



Significant higher % 75+
10,9% : 8,5%



Residents 13.238



Native Dutch
67,9%



Non-native
Dutch 19%



Settlers 504



Births 117



Deceased 139



Leavers 520



Households
5925, average
households
2,3



Households with
childrens 2004
(36,9%)



Singles 31,9%



businesses
563



Unemployed
970



Informal care
Oss 14%, vs
NL 12,1%



Less volunteers and
participating in
sportclubs than in Oss



Unemployed
for > 3 years
33,3%



Families with low
income 42% (38%
in Oss)



Low education
level
(19-64 jaar) 36%



Frailty elders:
29%



39% 19-64 jr.
exercice norm



Overweight Ruwaard
19-64 jr. 57% (Oss 49%)
10-12jr 25% (Oss 17%)



Social economic status very low: 1.29
versus Dutch SES-score 0.19, in Oss
0.22. High SES score means low SES



Low mental health status: 33,3% : 27,5%), psychiatric problems (22,3% : 21,4%)
higher than in the rest of municipality Oss.
Lifestyle and age-related diseases as diabetic (55,45% : 44,05%), COPD, asthma (22,74% : 17,60%)
artrosis (20,41% : 15,63%), depression (22,03 : 20,51%)
significant higher in Ruwaard

Experiment Ruwaard is:



Ruwaard is a vital community where residents experience life in a better (positive) health for a lower budget

By:
Thinking, acting,
organizing differently



Our Ambition, goals and interventions

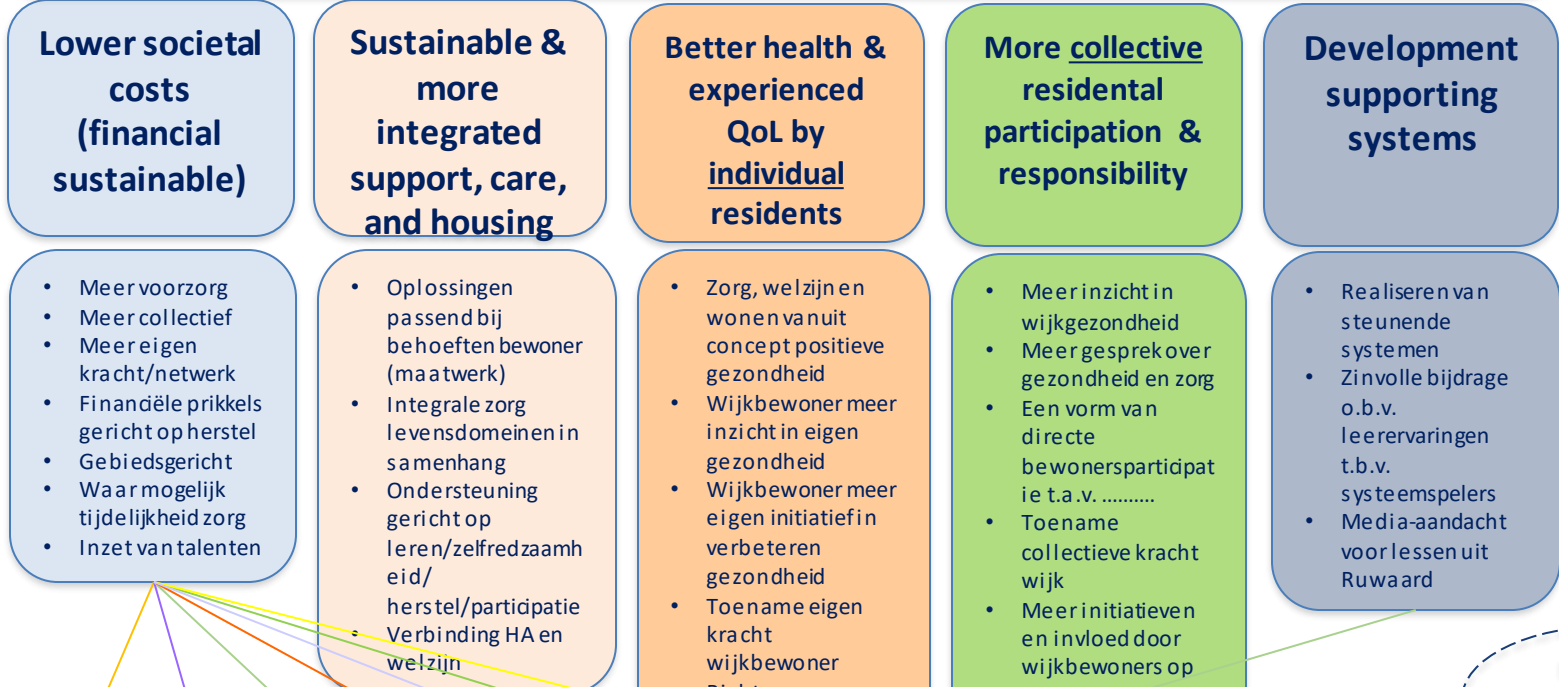
Thinking, acting, organizing differently.

Experiment Ruwaard

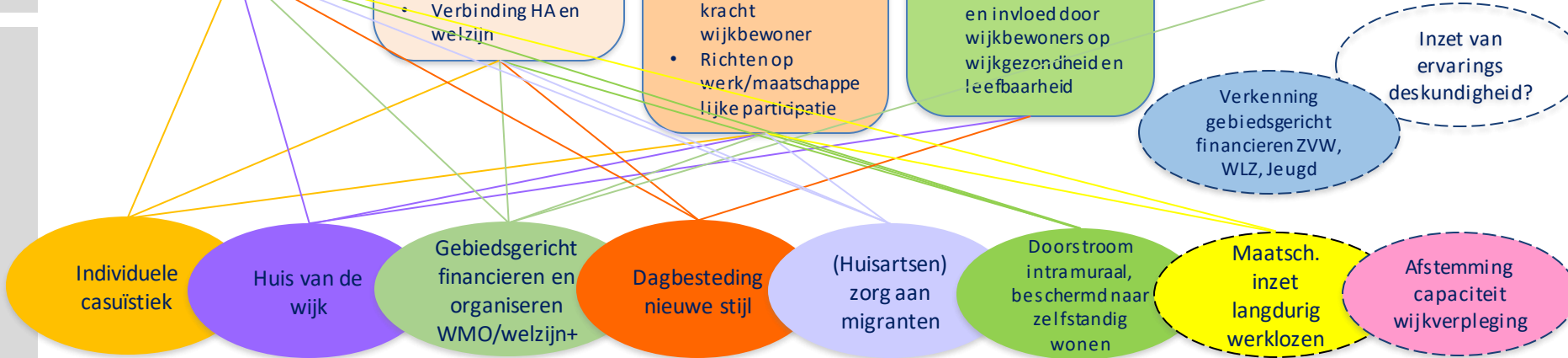
Visie

Ruwaard is een vitale wijk waar bewoners tegen lagere kosten een betere (positieve) gezondheid ervaren. Een gebiedsgerichte, integrale samenwerking en bekostiging van wonen, welzijn en zorg wordt als hefboom voor deze verandering gebruikt. De wijkbewoners worden hierbij nauw betrokken vanuit hun eigen leefwereld en verantwoordelijkheid (mensgericht). Met creatieve en vernieuwende oplossingen in een cultuur van vertrouwen werken we aan de gewenste kanteling in de samenleving, door ons te richten op een gedragsverandering bij financiers, bestuurders, managers, professionals en wijkbewoners.

Strategische doelen en operationele richting



Interventies/experimenten



Individuele casuïstiek

Huis van de wijk

Gebiedsgericht financieren en organiseren WMO/welzijn+

Dagbesteding nieuwe stijl

(Huisartsen) zorg aan migranten

Doorstroom intramuraal, beschermd naar zelfstandig wonen

Maatsch. inzet langdurig werklozen

Afstemming capaciteit wijkverpleging

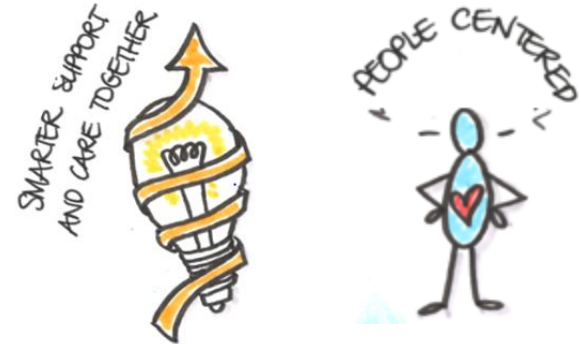
Verkenning gebiedsgericht financieren ZVW, WLZ, Jeugd

Inzet van ervaringsdeskundigheid?

What do we do to accomplish this?

Action learning:

- Thinking differently – seeking for solutions with resident without restrictions
- Acting differently – executing solutions without restrictions
- Learning – helping factors, obstructing factors, results and what needs to be organized to work this way
- Organizing differently



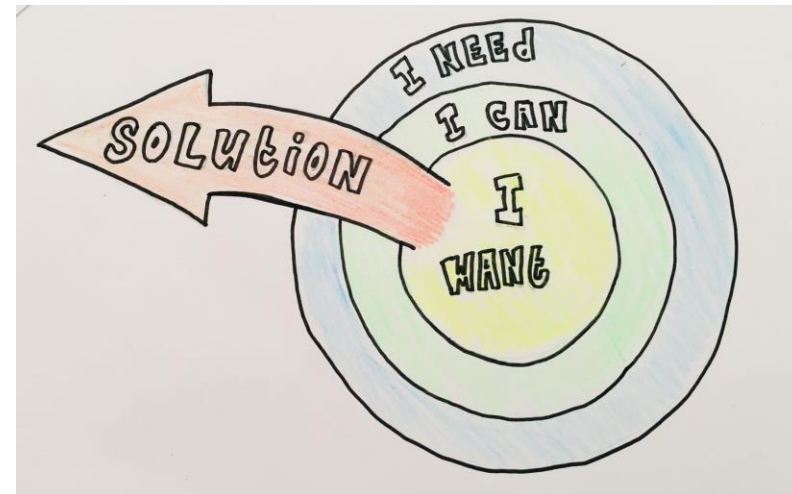
- NOT POSSIBLE?
- DO IT ANYWAY!



- EFFECT ♥ + €
NEW WAY OF DOING

Caseload approach: on individual and collective level

- Resident puts in (together with mentor) his request for help
- A multidisciplinary consultation (MDC) is organized with all involved parties present at the residents home
- Request for help is analyzed by asking the three main Ruwaard questions: 'what do I want', 'what can I do', 'what do I need'
- Solution created by residents and professionals is executed
- Micro-analyses on the social return of this solution

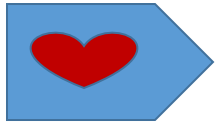




...to visit residents at home.

Micro-analysis on social return of investment: measuring effects and action-oriented learning

Experienced Well-being



Short explanation by residents before and after solution

Societal costs before and after solution by Experiment Ruwaard



1 Costs current situation

2 Extra costs if we don't change a thing

3 Costs after the Ruwaard solution

Difference 1-3

Results Micro-analysis

Experienced Well-being (n = 13)



Experienced well-being before

2,9

Experienced well-being after

7,6

Societal costs before and after solution by Experiment Ruwaard (n =25)



Difference, based on n = 25 on a yearly base: ± € 120.000

Existing cases (n =21)

Huidige kosten op jaarbasis	€ 471.600,00
Kosten als we niks doen	€ 768.825,00
Eenmalige kosten (incl MDO)	€ 54.937,00
Nieuwe kosten op jaarbasis	€ 307.008,50
Vershil jaarlijkse kosten	€ 164.591,50
Vershil inclusief eenmalige kosten	€ 109.654,50

New cases (n=4)

Nieuwe casus (had nog geen zorg)	
Kosten als we niks doen	€ 178.035,00
Eenmalige kosten (incl MDO)	€ 39.195,00
Nieuwe kosten op jaarbasis	€ 59.035,00
Vershil jaarlijkse kosten	€ 119.000,00
Vershil inclusief eenmalige kosten	€ 79.805,00

Thinking, acting, organizing differently.

Experiment Ruwaard

In contact with Ruwaard?

Susanne Smits, Programmamanager

s.smits@rosrobuust.nl

Bart Bakker, Wijkaanjager

b.bakker@oss.nl

Jord Neuteboom, Transitiecoach

jord@viatore.nl

You can find more on Ruwaard: www.proeftuinruwaard.nl (in Dutch)